

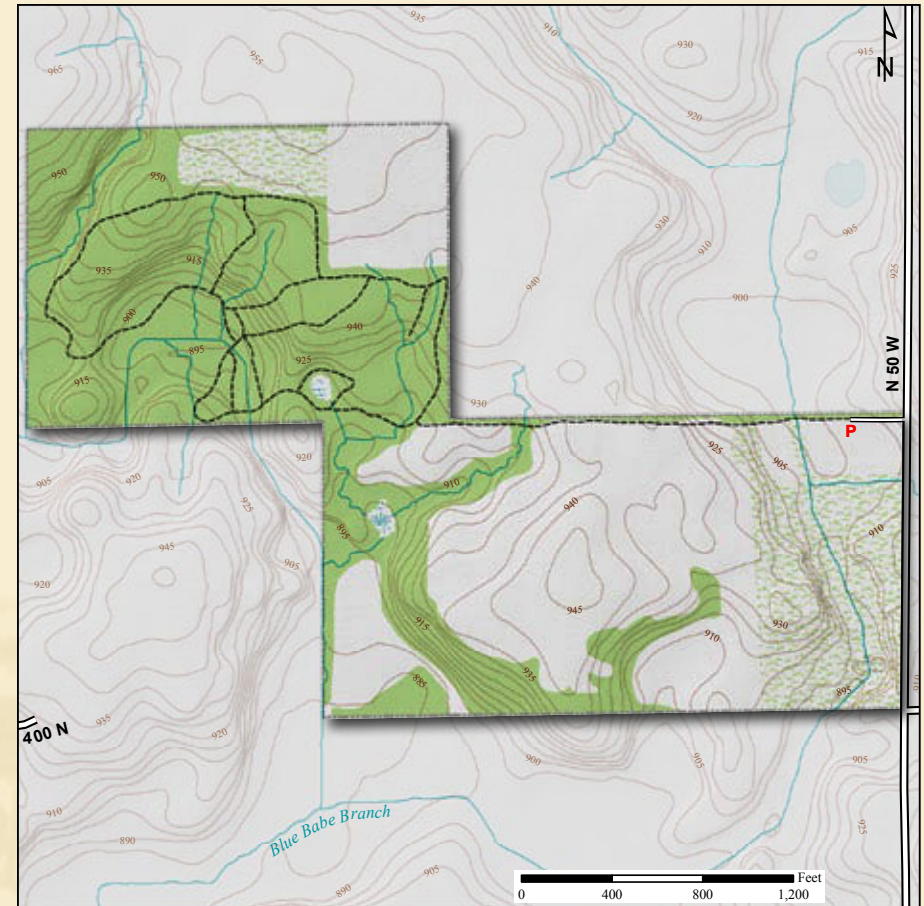
Blue-Eyed Mary

**Acreage: 55.8**

**Year Acquired: 2001**

This forested high land cut by ravines has a long list of trees – beech, maple, oaks, hickories, cherry and many more. Lists of birds and wildflowers are even longer: red-tailed hawks and great horned owls, blue jays, cardinals, red-eyed vireos, downy, hairy and red-bellied woodpeckers, blue-eyed Mary, Jack-in-the-pulpit, spring beauty, blue, white and yellow violets, firepink and many more.

Latitude: 41° 13' 30"N Longitude: 85° 30' 06"W



**Directions:**

From Columbia City, take SR 109 north of US 30 for approximately 3.6 miles to CR 400N and turn left (west). Travel ½ mile to 50W and turn right (north). Preserve is on the left in ¼ mile.

