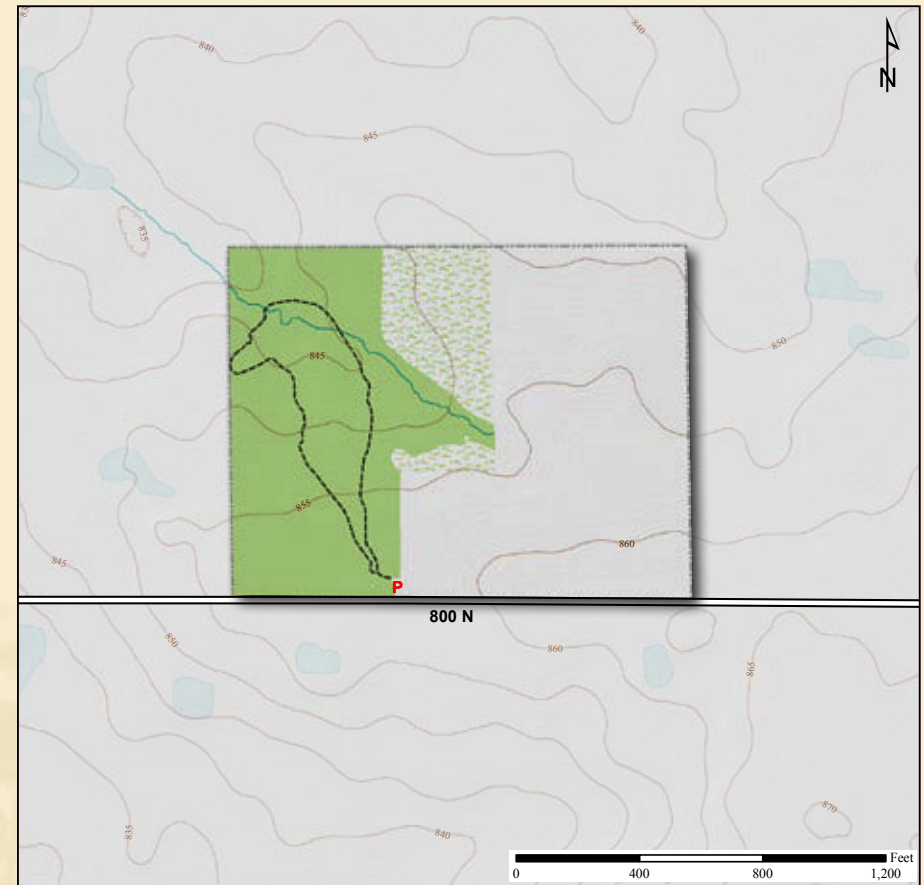




Latitude: 40° 51' 34"N Longitude: 85° 13' 50"W



Bloodroot

Acreage: 40.0

Year Acquired: 1982

This is a forest oasis, a stand of mature red and white oaks, hickory, cherry, beech and maple trees surrounded by cultivated fields. More trees have been planted on six adjacent acres to enlarge this oasis. A small stream, which dries up during periods of drought, winds through the forest and several species of salamander live here. Bloodroot, squirrel corn, spring beauty, wild phlox, Dutchman's breeches and many more wildflowers grow profusely beneath the trees.

Directions:

From Bluffton, take SR 1 north for 8 miles to 800N and turn left (west). Reserve is on the right in 3.3 miles (½ mile past Meridian Rd.).

