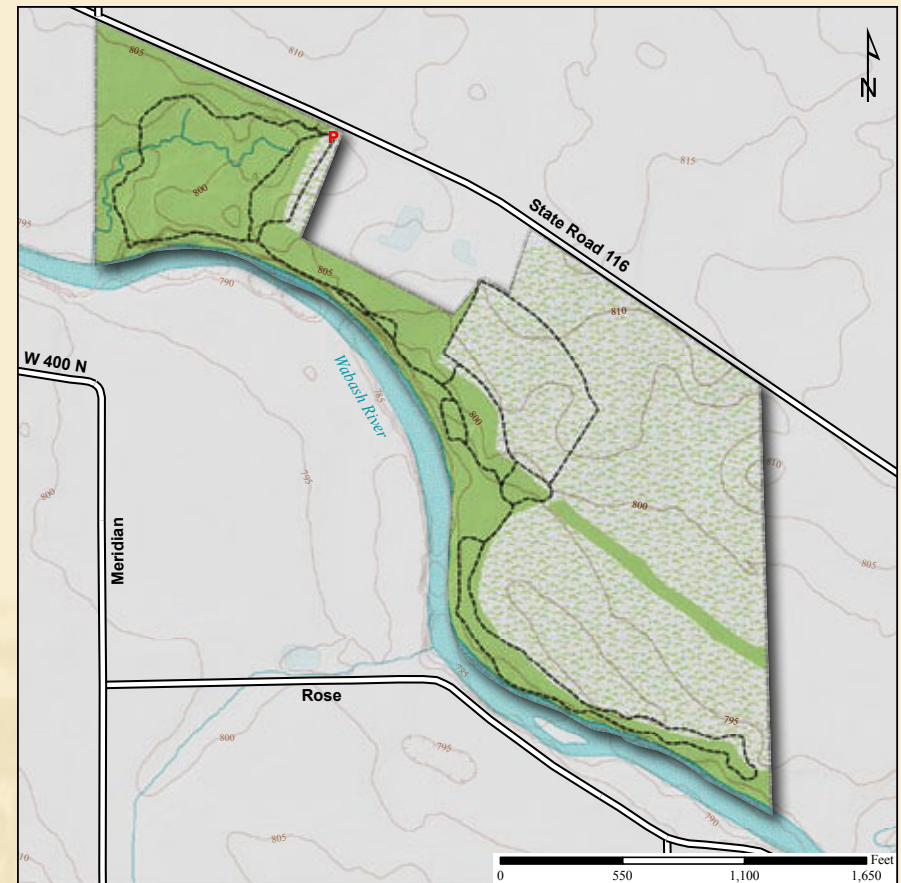




Latitude: 40° 48' 09"N Longitude: 85° 13' 08"W



Swamp Sparrow Nest

**Acreage: 86.7**

**Year Acquired: 1973**

Here along the Wabash River, stand sycamore, hackberry, burr and red oak trees that stood along the river when Native Americans roamed the land, and trees that white explorers passed as they paddled down the river. On the bluffs are sugar and black maple trees and red elms. In spring there are warblers and other migrating birds in the trees; in summer, such nesting birds as wood thrush and red-eyed vireo. Woodland wildflowers, including shooting star and wild hyacinth, decorate the woodland floor in season.

**Directions:**

From Bluffton, travel north on SR 1 for one mile to SR 116 (Dustman Rd.) and turn left (west). Follow SR 116 through Murray approximately 4.6 miles. Preserve is on the left 1.25 miles past Murray.

***This preserve features a trail to the river overlook that meets American Disabilities Act (ADA) standards.***

