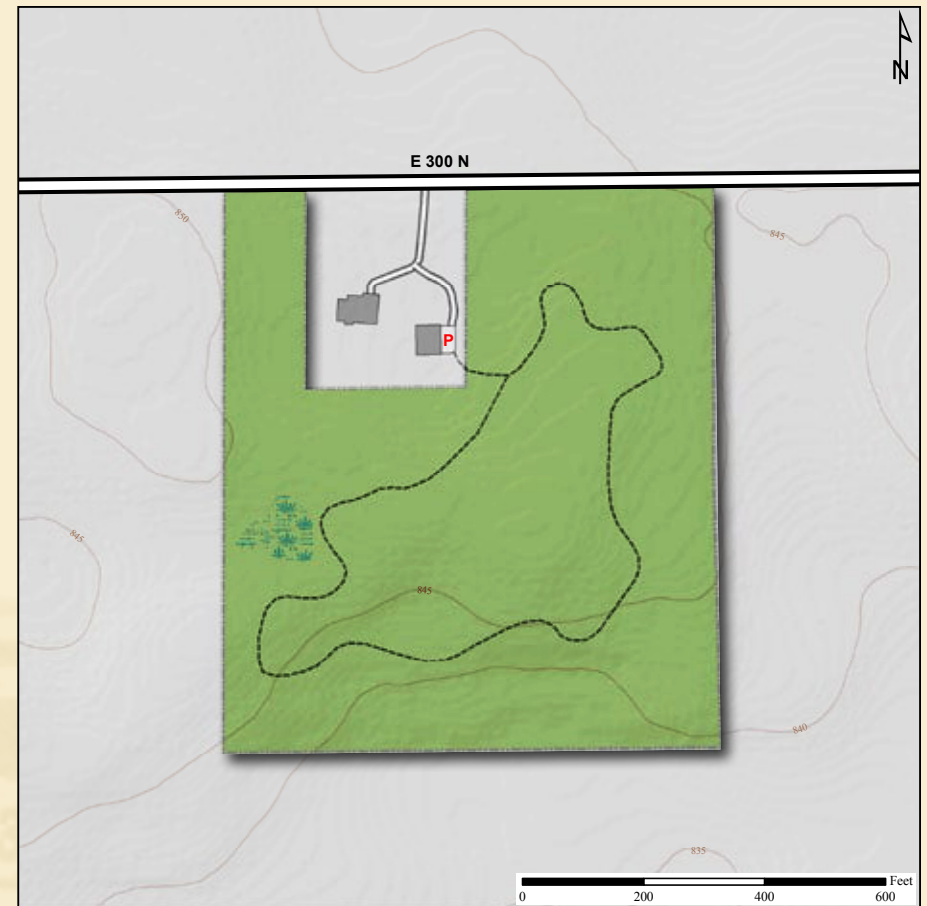




Latitude: 40° 52' 09"N Longitude: 85° 45' 55"W



Dogday Cicada

**Acreage: 15.0**

**Year Acquired: 2008**

This preserve provides a great vantage of an oak-hickory forest being converted into a beech-maple forest. The understory is native and diverse, and the property contains ephemeral wetlands that provide great amphibian habitat and breeding areas. Even though the preserve is relatively small, wildlife is abundant.

**Directions:**

From Wabash on SR 13, travel 2.6 miles north of US 24 to 300N and turn right (east). Preserve is on the right in 1.4 miles.

