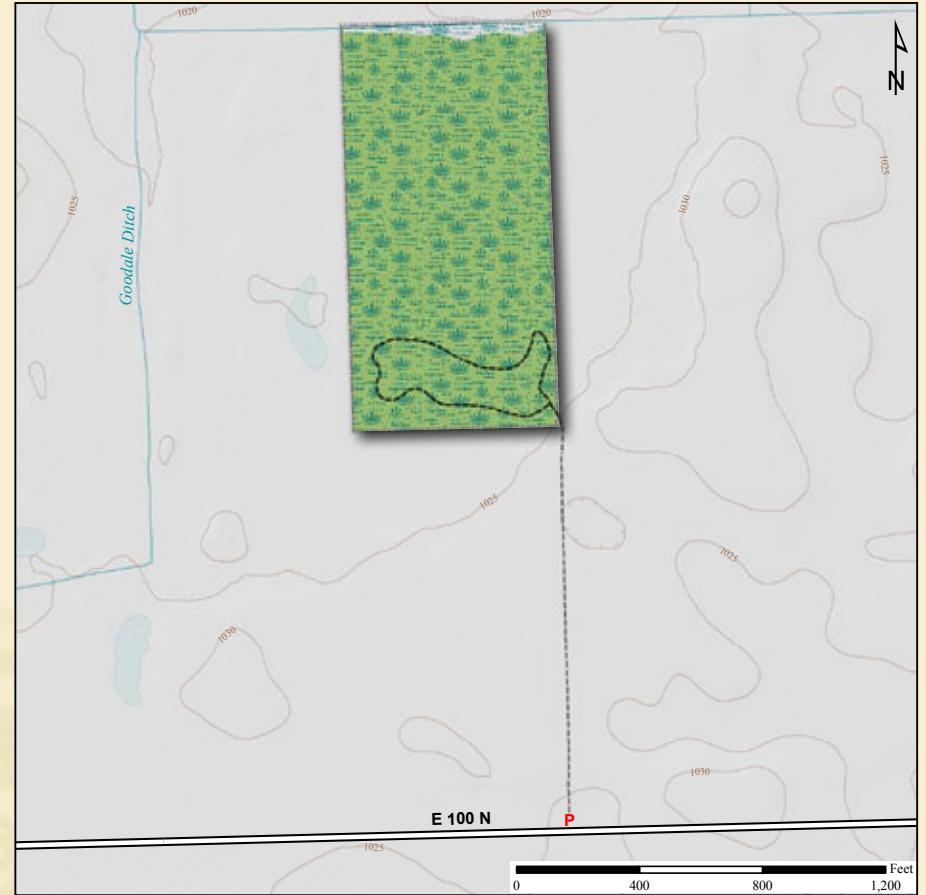




Latitude: 41° 39' 28"N Longitude: 84° 56' 42"W



Cinnamon Fern

Acreage: 20.0
Year Acquired: 1965

Beneath the swamp forest of red maple, red elm, pin oak, swamp white oak and bigtooth aspen is the peat of a centuries-old bog. Tamaracks probably once dominated the forest and scattered tamaracks survive. There are stands of cinnamon and royal fern with fronds as tall as six feet high, swamp dewberry and highbush blueberry. Many of the nesting birds are elusive denizens of wetlands.

Directions:

From Angola, take US 20 east 1.5 miles to 100E and turn left (north). Travel 1.3 miles to 100N and turn right (east). Preserve is on the left in 1.3 miles.

