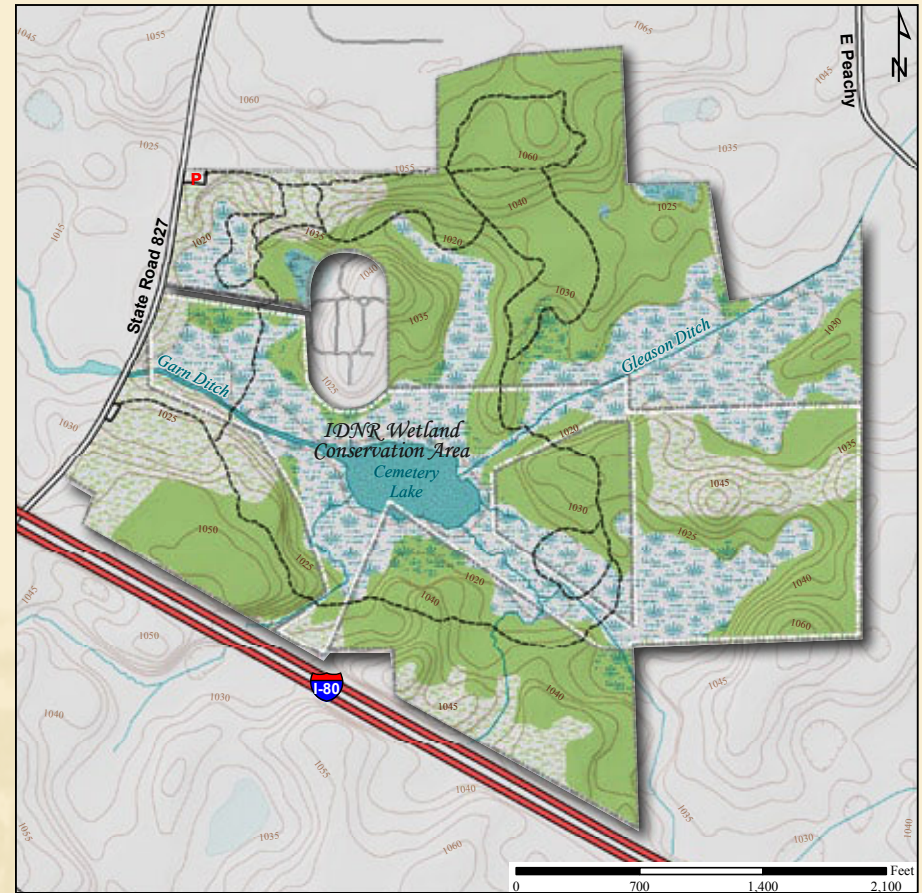


Latitude: 41° 42' 58"N Longitude: 84° 56' 12"W



Great Blue Heron

Acreage: 184.0
Year Acquired: 1976

The glaciers sculpted this country creating rolling hills, gravel and sand kames and a kettle hole lake, Cemetery Lake. The preserve has upland oak-hickory forest, once cultivated fields now not planted and in different stages of succession, and wetlands by the lake. This is a natural sanctuary for birds, other wildlife and plants. A platform by the creek is used by visitors looking for ducks and other water birds, great blue herons, muskrats and beaver.

Directions:

From Angola at US 20, take SR 827 (Williams St.) north for 6.5 miles. Preserve is on the right 0.4 mile after passing under the I-80/90 toll road.

