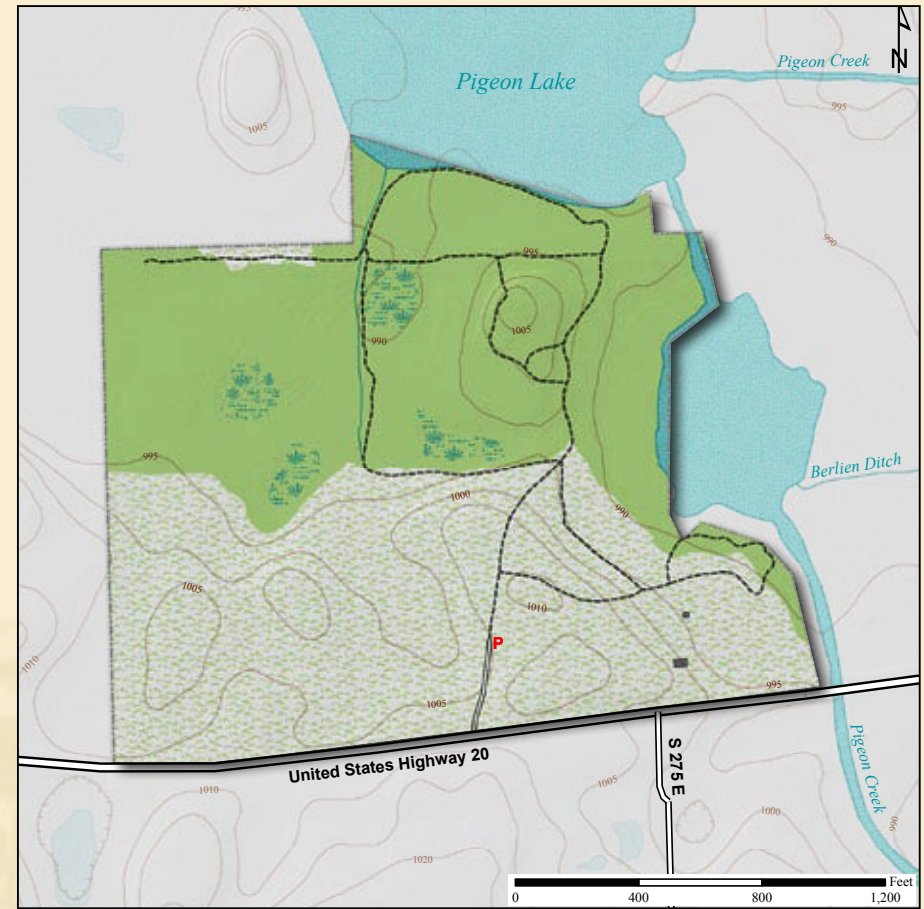




Latitude: 41° 37' 54"N Longitude: 84° 56' 31"W



Bull Frog

**Acreage: 80.0**  
**Year Acquired: 2004**

Brammall Nature Preserve consists of a rolling meadow and wetland forest, along with a lake and stream. The names Pigeon Pond, Pigeon Creek and Pigeon Lake, each within the preserve, are reminders of a time when wild pigeons visited the area. In summer, the flowers of cardinal flower, white snakeroot and tall blue bellflower greet visitors with their red, white and blue blossoms.

**Directions:**  
 From Angola, take US 20 east approximately 3 miles. Preserve is on the left 0.6 mile after crossing 200E.

