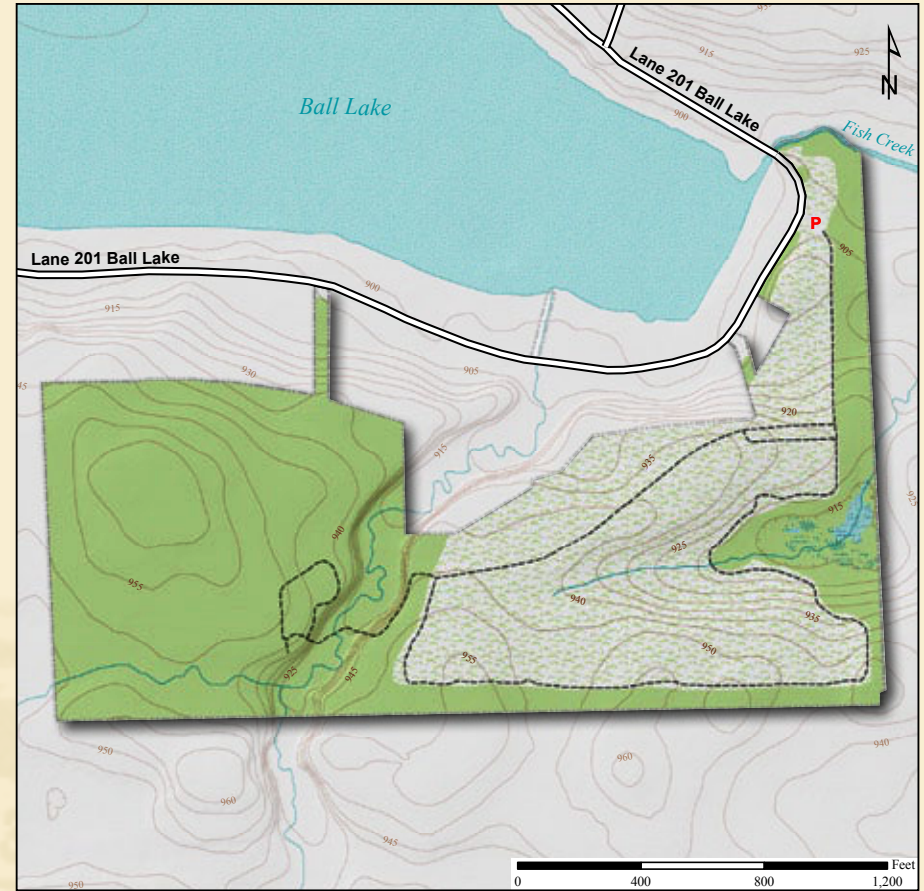




Latitude: 41° 32' 11"N Longitude: 84° 56' 14"W



Acreage: 65.0
Year Acquired: 1995

Hidden Canyon is a steep-sided ravine with a clear stream running through it, beech and maple trees on the slopes, and a grassy meadow at the top from which a visitor has a panoramic view of Ball Lake. Beneath the trees on the slopes grow bishop's cap, jewelweed, rue anemone, wild phlox, black cohosh, spring beauty, Virginia waterleaf and large-flowered trillium while in the trees are scarlet tanagers, indigo buntings, wood thrushes and rose-breasted grosbeaks.

Directions:

From Hamilton, at SR 427 take Bellefontaine Rd. northwest 1.5 miles to Lane 201 and turn left (south). Travel ¼ mile to Lane 201A and turn left. Preserve is on the left after the first curve.

