



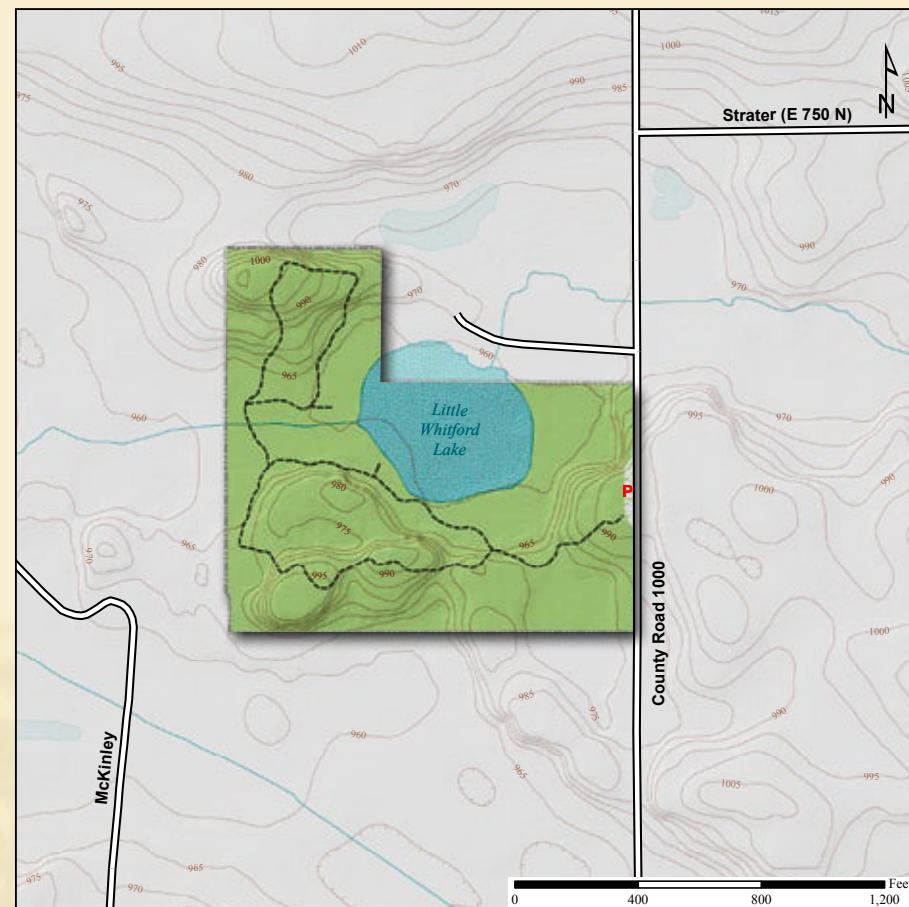
Marsh Marigold

**Acreage: 30.2**

**Year Acquired: 1979**

Lonidaw is a Native American name meaning Spirit Queen of the Woods. A Native American, wife of Potawatomi Chief Simon Pokagon, bore the name. Perhaps her spirit is still among the beech and maple trees on the high ground or the sugar maple, red elm, walnut and hackberry that stand on the lower ground. Maybe her spirit is among the wildflowers: wild columbine, celandine poppy on the higher ground, skunk cabbage and marsh marigold in the low wetland around the shore of Little Whitford, a five-acre kettle lake, or with the birds and other wildlife that are seen in this preserve.

Latitude: 41° 27' 23"N Longitude: 85° 13' 54"W



**Directions:**

From Kendallville at Main St., take US 6 east 1 mile to Kammerer Rd. (700N) and turn left (north). Travel past Detering Nature Preserve entrance to 1000E (Allen Chapel Road) and turn left (north). Preserve is on the left in ¼ mile.

