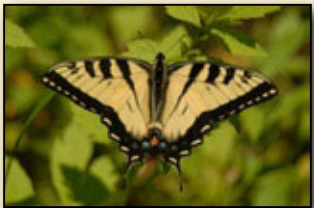
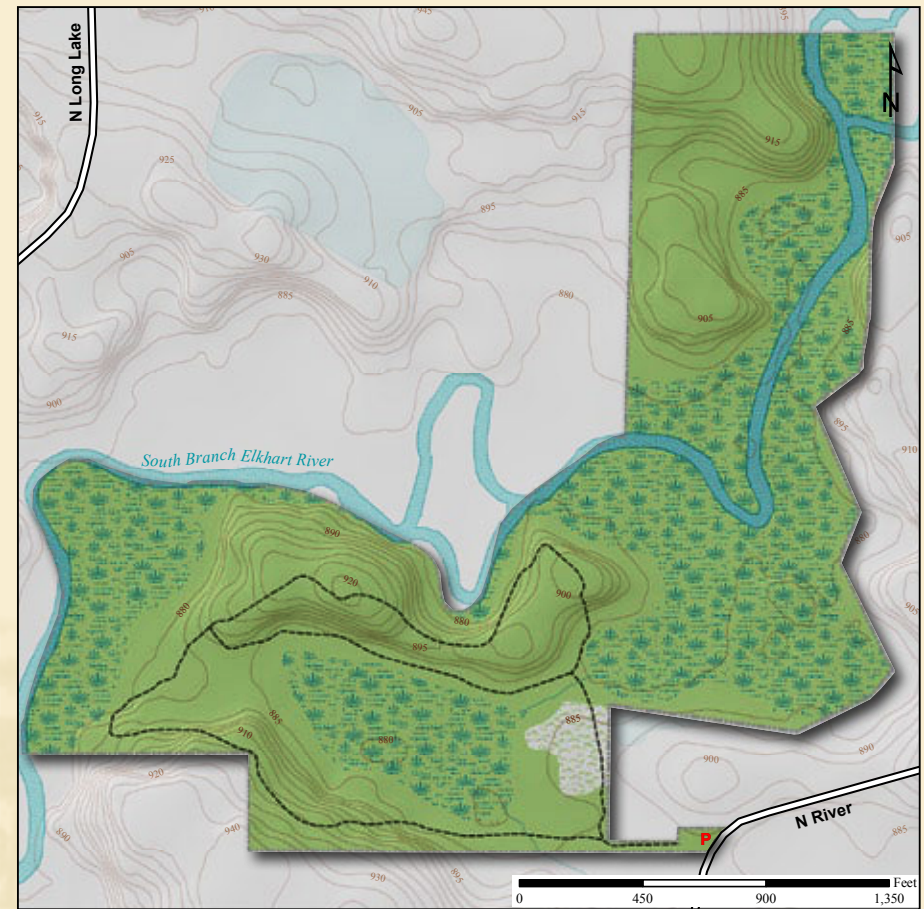


Latitude: 41° 22' 49"N Longitude: 85° 27' 23"W



Tiger Swallowtail

Acreage: 60.5

Year Acquired: 1966

Enter this preserve on a short boardwalk in a wetland, go uphill, then down, then up, then down again traversing wetland forest, upland forest, an area of forested floodplain of the Little Elkhart River called "the spreads," and a brushy section of sedge meadow. The variety of habitats is more than matched by the variety of trees, birds and wildflowers. There are burr oaks, white oaks, hickories, swamp white oaks, red elms, black willows, green and black ash, cottonwoods and red maples. Plants include royal and cinnamon fern.

Directions:

From Albion, take SR 9 south ½ mile and turn right (west) onto West River Rd. (250N). Follow West River Rd. for 1.25 miles. Preserve is on the right.

