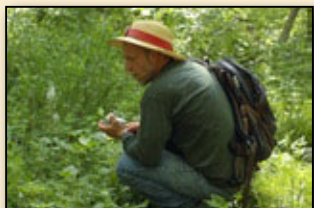
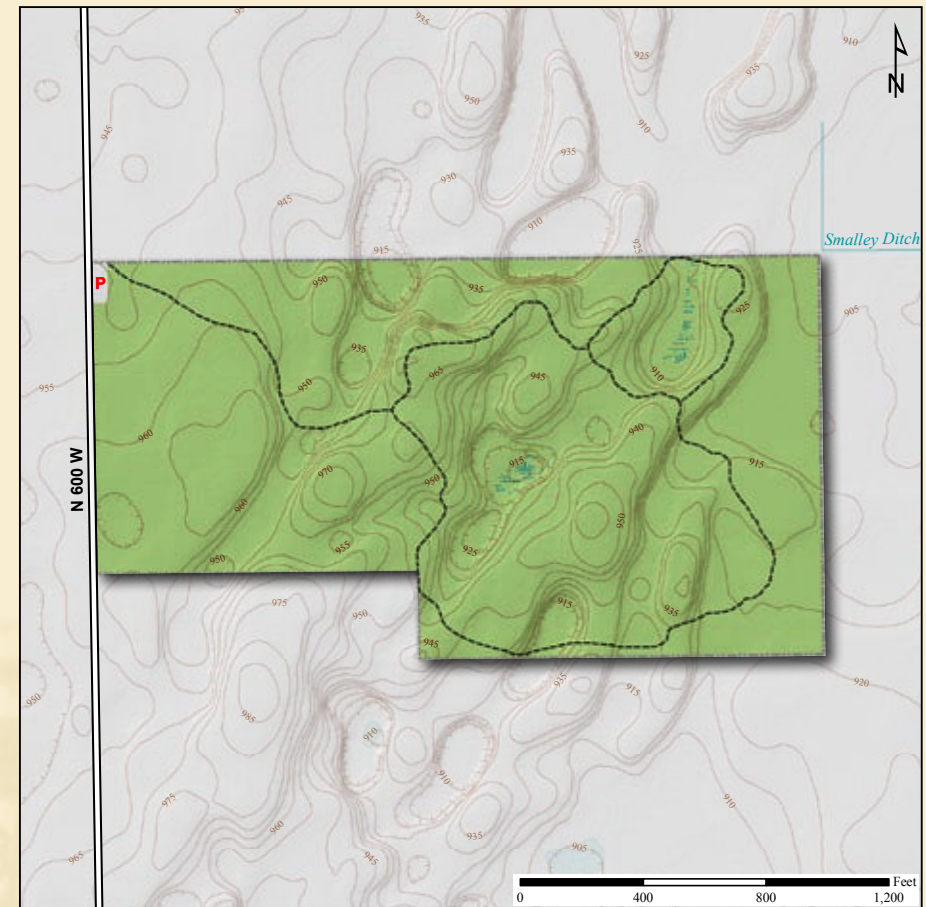




Latitude: 41° 29' 19"N Longitude: 85° 32' 19"W



Acresage: 65.0

Year Acquired: 1961, 1964

The Edna W. Spurgeon Woodland Reserve was ACRES' first property. It's an area of low ridges or kames left by glaciers and cut by glacial meltwater. A climax forest of beech and sugar maple and tulip trees that are among the largest in the state covers the area. Beneath the trees grow large-flowered and sessile trillium (also known as toadshade), blue-eyed Mary, bloodroot, hepatica, celandine poppy, Dutchman's breeches and squirrel corn.

Directions:

From Ligonier, take SR 6 east 2.5 miles to 600W and turn left (north). The reserve is on the right in 2.25 miles.

