

Blue Flag Iris

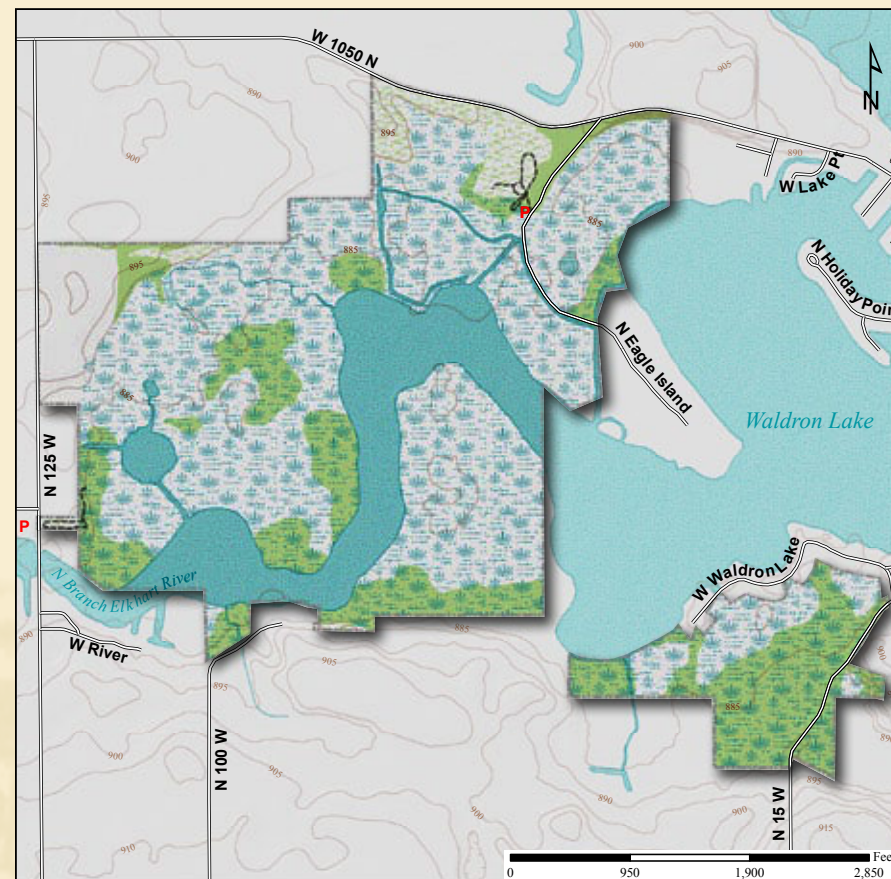
Acreage: 373.0

Year Acquired: 1986

The Art Hammer Wetlands is ACRES' largest preserve. It has a variety of habitats, swamp forest with cottonwood and sycamore trees, upland forest with oaks and hickories, a small lake, a length of shore of the Elkhart River and areas of low wetlands. Birds and wildflowers are diverse. Wood ducks, mallards, other ducks and coots have been seen on the water, woodland birds fly among the trees, and great blue and green herons walk along the shores. Cardinal flowers, marsh marigolds, blue flag iris and marsh mallow are a few of the flowers that bloom here.

EAST Latitude: 41° 30' 30"N Longitude: 85° 26' 00"W

WEST Latitude: 41° 29' 35"N Longitude: 85° 26' 52"W



Directions:

East trailhead – From Rome City on SR 9, take 1000N west for 2 miles. 1000N will turn into 1050N; continue on 1050N for another mile and turn left (south) onto Eagle Island Rd. Preserve will be on the right in 0.15 mile.

West trailhead – Instead of turning onto Eagle Island Rd., continue west $\frac{3}{4}$ mile and turn left (south) onto 125W. Preserve is $\frac{3}{4}$ mile on the left. Park at the IDNR public access.

