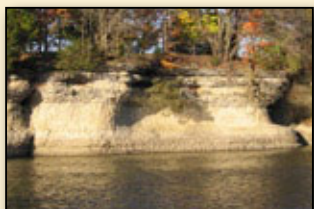
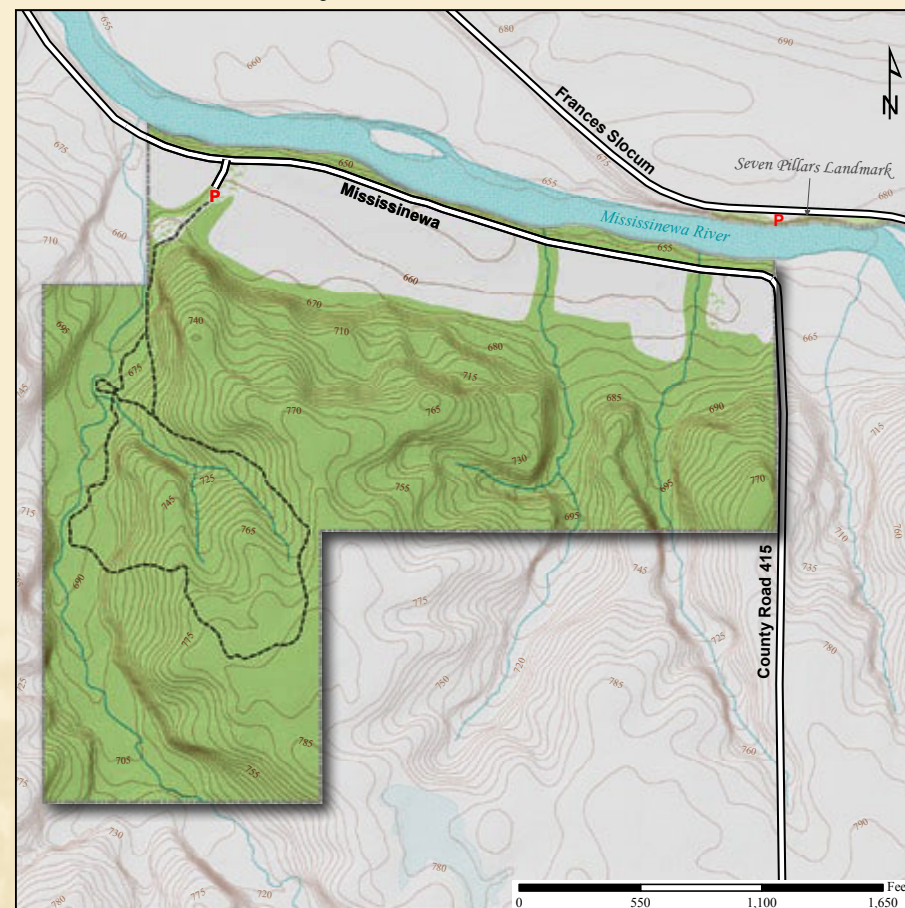




Latitude: 40° 43' 36"N Longitude: 86° 00' 15"W



Limestone Pillars

Acreage: 147.3**Year Acquired: 1992**

The preserve, on the south side of the Mississinewa River, is named after the landmark 25-foot limestone pillars, also owned by ACRES, which are located on the north side of the river. On the top of the bluff grow red cedar, juneberry and shadbush while in the preserve are beech and maple and other trees and open meadow. The Miami Tribe continues to gather at the pillars for councils and powwows.

Directions:

From Peru, take Broadway south to Riverside Rd. and turn left (east). Riverside Rd. turns into SR 124. Continue east to 300E (Mississinewa Rd.) and turn right (south). Travel 1.25 miles to a point where 300E (Mississinewa Rd.) turns left and continue another ¼ mile to the preserve on the right. Continue east on Mississinewa Rd. to 415E for a view of the Seven Pillars Landmark.

