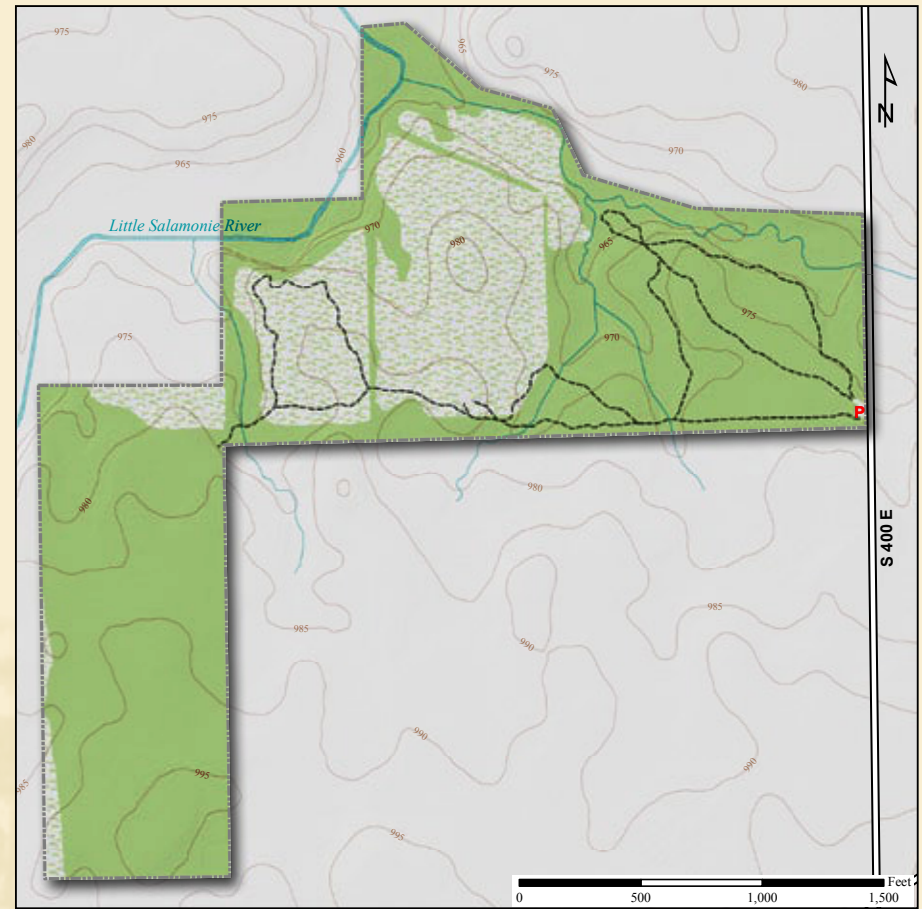




Latitude: 40° 21' 38"N Longitude: 84° 54' 03"W



Acreage: 104.5
Year Acquired: 1992

Smooth Solomon's Seal

Once part of a homestead called Spring Brook Farm, this preserve has abandoned farm fields, grassland and a second-growth woods of oak, hickory and maples. Rocky streams form the north and west boundaries. Louis A. Bibler grew up there and wrote *Back Home Again*, the story of his childhood at Spring Brook. Where he played and grew, visitors may see birds of field and forest, and wildflowers, including twin leaf and Solomon's seal.

Directions:

From Portland, take SR 27 south 5 miles to 500S and turn left (east). Continue on 500S for 4 miles to 400E and turn right (south). Preserve is ½ mile on the right.

