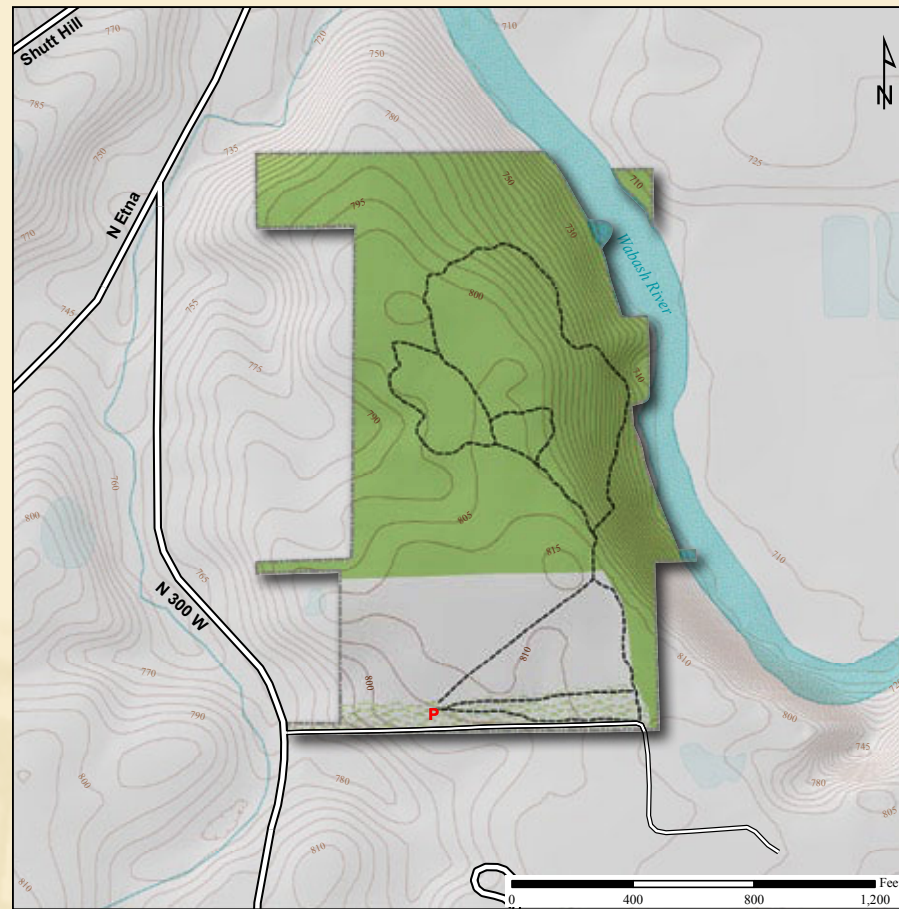


Latitude: 40° 51' 01"N Longitude: 85° 30' 30"W



Celandine Poppy

**Acreage: 39.4**

**Year Acquired: 1994, 1997**

In Hebrew, Tel means "high" and Hy means "life," and the names, individually or together, are appropriate. From a bluff high above, visitors have a splendid view of the winding Wabash River, and there is life along the river and on the land above: beech and maple trees, sycamores and willows, and a variety of birds and wildflowers, including wood ducks on the river, scarlet tanagers and wood thrushes in the trees, and wild ginger, celandine poppy and rue anemone blooming in season on the ground.

**Directions:**

From Huntington, take SR 9 south to 200N and turn left (east). Travel 1.25 miles to Etna Ave. and turn right (south). Travel ¼ mile to 300W and turn left (south). Preserve is 0.35 mile on the left.

