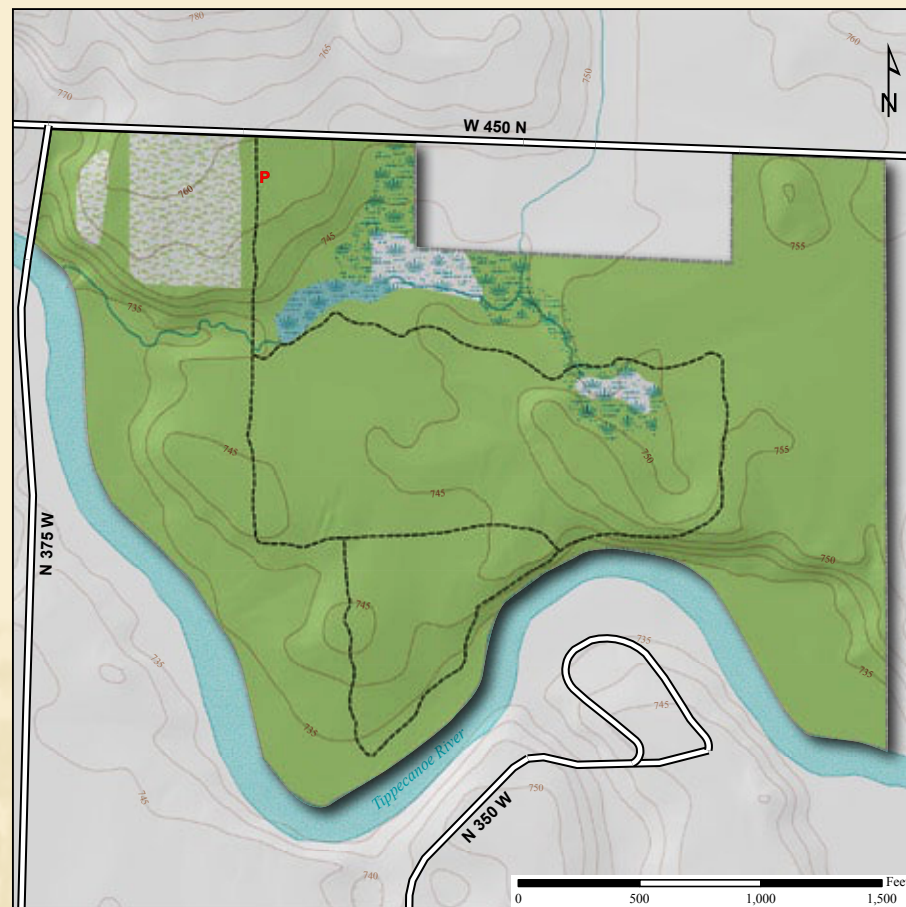


Latitude: 41° 07' 14"N Longitude: 86° 18' 40"W



Red-Tailed Hawk

**Acreage: 149.3**

**Year Acquired: 2007**

The Ruth Kern Woodland Preserve is another property of varied habitat with the Tippecanoe River flowing on its southern boundary. There is older growth bottom land forest, upland secondary growth forest, an abandoned Christmas tree farm, and approximately five acres of wetlands. The forested areas include hardwoods and pines. In the Tippecanoe River are several endangered species, including two mussels and four fish.

**Directions:**

From Rochester, take Old US 31/ Main St. north to 450N and turn left (west). Cross over US 31 and continue west for 3.75 miles. Preserve will be on the left.

*This preserve is closed October through January due to permitted hunting.*

