



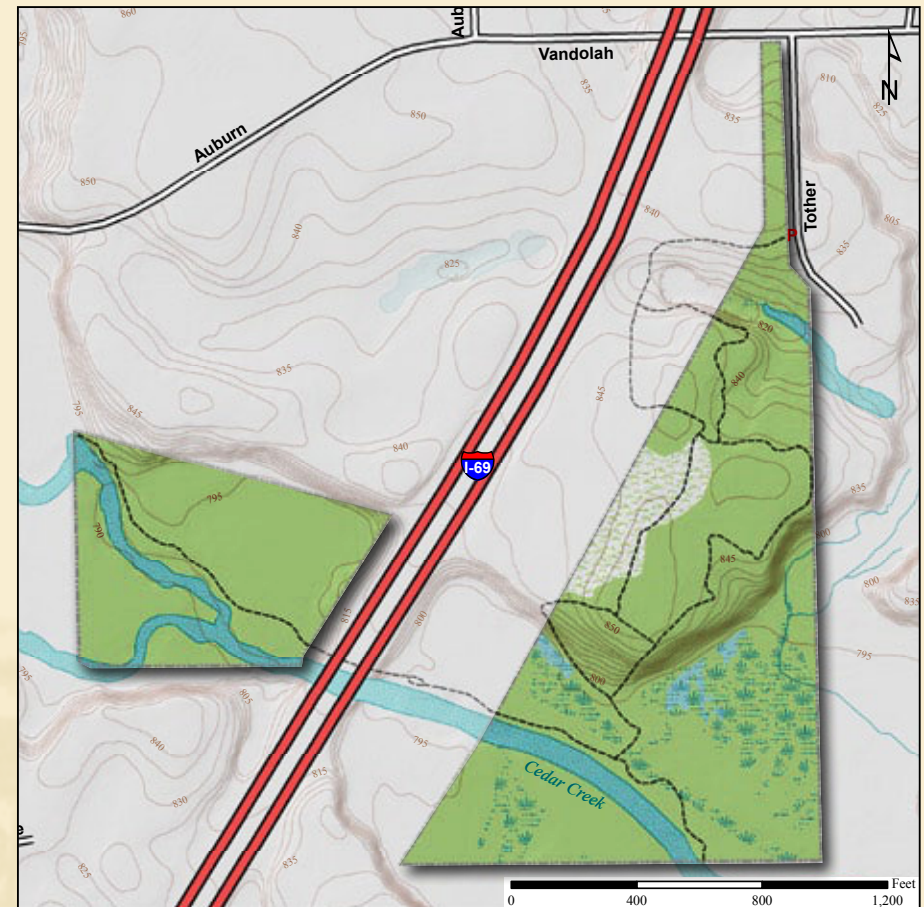
Dutchman's Breeches

Acreage: 47.0

Year Acquired: 1989

This preserve is nature adjacent to the modern world in the form of Interstate 69 crossing, and the sound of traffic is ever present. Yet the visitor who can ignore the traffic noise can enjoy the view of Cedar Creek from a high escarpment and trails through old fields, by a marsh and across ravines. Beneath the trees in spring, twinleaf, hepatica, Dutchman's breeches, bloodroot and rue anemone bloom, and in the wetland, wood ducks, and great blue and green herons are frequently seen.

Latitude: 41° 14' 11"N Longitude: 85° 05' 33"W



Directions:

From Fort Wayne (I-69 exit 116), take Dupont Rd. 1.5 miles east to SR 427 (Tonkel Rd.) and turn left (north). Travel 4.0 miles to Vandolah Rd. and turn left (west). Continue ¾ mile to Tother Rd. and turn left (south). Preserve entrance is at the end of Tother Rd.

